



New England Wildlife Centers
...where animals and people thrive



Internship Application



Thomas E. Curtis Wildlife Hospital in Weymouth, MA



Birdsey Cape Wildlife Hospital in Barnstable, MA

New England Wildlife Centers
500 Columbian Street, South Weymouth, MA 02190
newwildlife.org

New England Wildlife Centers
Internship Application
500 Columbian Street, South Weymouth, MA 02190
newwildlife.org

WE ARE AN EQUAL OPPORTUNITY ORGANIZATION

It is the policy of New England Wildlife Centers to afford equal employment/internship opportunities to all qualified persons regardless of race, color, religion, national origin, age, military status, sexual orientation, disability or gender,

Please select what location you are applying for:

Thomas E. Curtis Wildlife Hospital: _____
South Weymouth, MA

Birdsey Cape Wildlife Hospital: _____
Barnstable, MA

Personal Information

Name (First)	(Middle Initial)	(Last)	Telephone Number
Mailing Address (Street)		(City)	(State) (Zip)
Email Address		Date of Birth ____/____/____	

Insurance Information

Do you have health insurance? Yes: _____ No: _____

Proof of insurance will be required upon acceptance. Our insurance requires this; if you have no insurance, we will be unable to consider you for a position. Photo copy of health insurance card is acceptable for proof.

Rabies Information

We do require that all staff and interns who work with the animals are rabies vaccinated due to the high volume of rabies vector animals that we care for. We do understand that the cost can be prohibitive. However, since we are a non-profit we are unable to assist with the cost of the rabies shots.

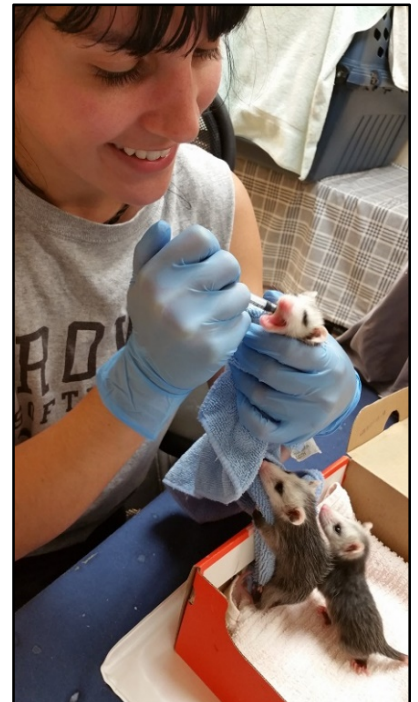
Are you currently rabies vaccinated? Yes: _____ No: _____

If no, upon acceptance you will need to complete the Pre-Exposure Rabies vaccination series and supply the hospital with a copy of your records two weeks prior to your start date.

Tetanus Information

Do you have an updated Tetanus shot? Yes: _____ No: _____

If no, upon acceptance you will need to receive an updated Tetanus vaccine and supply the hospital with a copy of your records two weeks prior to your start date.



Housing Information
<p>Housing is available on a very limited basis at a charge of \$50.00 a week.</p> <p>Will you require housing during internship? Yes: ____ No: ____</p> <p>The Center is unable to offer assistance in finding alternative housing. If you require housing and it is not available are you still able to participate in the program? Yes: ____ No: ____</p>

Requested Dates of Internship (be as specific as possible)
<p>Start Date (mm/dd/yyyy): _____ End Date (mm/dd/yyyy): _____</p> <p><i>If above dates are unavailable, my alternative requested dates are:</i></p> <p>Start Date (mm/dd/yyyy): _____ End Date (mm/dd/yyyy): _____</p>

Shift Rotation Information
<p>The clinic is open 7 days a week, 365 days a year. Typical shift hours run from approximately 9am - 6pm. Interns, like all staff, are asked to work until all patients are treated.</p> <p>Some years, during the summer, depending on the patient load and staffing, the centers will divide the rotation shifts into two overlapping sessions. Session #1 runs from 7:00 AM - 3:00 PM and Session #2 runs from 11:00 AM - 7:00 PM.</p> <p>We try to be flexible for those students whose colleges require that they be in class on certain days as well as people with work commitments. Rank in order which rotation you would prefer in the table below. We will attempt to honor your preferences.</p>

Rotation Schedule		
Rank	Days On	Days Off
	Wednesday - Sunday	Monday, Tuesday
	Thursday – Monday	Tuesday, Wednesday
	Friday – Tuesday	Wednesday, Thursday
	Saturday – Wednesday	Thursday, Friday

If you are unable to choose any of the above rotations due to a work/school conflict please fill out below the days you are available.

Monday	Tuesday	Wednesday	Thursday	Friday	Saturday	Sunday

Please return your completed application and resume to Priya.patel@newwildlife.org
Two letters of recommendations and all other required documents should be sent to this email as well.

*Thank you for applying to
New England Wildlife Centers.*

